

## Accessories Programme



## Diagnosis and Treatment

Highest quality standards for safe and efficient endoscopy.

# PENTAX



## PENTAX Accessories Programme for diagnosis and treatment in state-of-the-art endoscopy

### Quality in terms of detail

Finely tuned system components are essential for safe and successful endoscopy. That is why we aim to provide the highest possible quality in terms of every detail for our selection of accessories. On the following pages, you will find a carefully compiled programme of accessories for state-of-the-art diagnostic and treatment applications.



### Orientation

In order to make your choice of PENTAX accessories as simple and reliable as possible, we have identified fundamental product features with easy-to-understand symbols displayed next to the relevant technical data.



**Autoclavable**



**Sterile packed**



**Single use only**



**Can be dismantled for cleaning**



**Can be used with HF-equipment**



**One piece with grip**

### How to choose the correct accessories

Before you decide on new accessories, we recommend that you read the following three-point checklist. Our PENTAX specialists will be pleased to advise you if you have any questions regarding your endoscope or which accessories are appropriate for it.

- Please check that your endoscope is compatible with the desired diagnostic/treatment application. Important relevant information can be found on your endoscope's identification plate.
- When choosing new instruments, please be sure to note the diameter of the working channel (see identification plate) and the available working length of your endoscope.
- All PENTAX original accessories in this catalogue have been tested in conjunction with PENTAX endoscopes for function and compatibility.



Please note that the maximum diameter of the accessory should be at least 0.2 mm smaller than the diameter of the instrument channel.



## Biopsy forceps

- Biopsy forceps with window .....4
- Biopsy forceps with window and extra large cups .....5
- Biopsy forceps with window and spike.....5
- Biopsy forceps with window, spike and extra large cups .....6
- Biopsy forceps with mini cups .....6
- Biopsy forceps with round cups .....7
- Crocodile Biopsy forceps .....7
- Hot Biopsy forceps .....8
- Hot Biopsy forceps for haemostasis .....8

## Grasping forceps .....9

## Basket grasping forceps .....10-11

## Injection needles ..... 11

## Polypectomy snares

- Snares oval .....12-13
- Snares hexagonal ..... 14

## Handles ..... 15

## Catheter/Spraying catheter ..... 15

## Biopsy forceps



Please note that the maximum diameter of the accessory should be at least 0.2 mm smaller than the diameter of the instrument channel.

### Biopsy forceps with window



Autoclavable



One piece  
with grip

| Code  | Article   | Description                    | Working length (mm) | Max. outer diam. (mm) |
|-------|-----------|--------------------------------|---------------------|-----------------------|
| 82940 | KW-1511S  | Biopsy forceps                 | 1100                | 1.5                   |
| 82942 | KW-1806S  | Biopsy forceps                 | 600                 | 1.8                   |
| 82944 | KW-1811S  | Biopsy forceps                 | 1100                | 1.8                   |
| 82946 | KW-1815S  | Biopsy forceps                 | 1500                | 1.8                   |
| 82950 | KW-1818S  | Biopsy forceps                 | 1800                | 1.8                   |
| 82948 | KW-1818CS | Biopsy forceps for ERCP scopes | 1800                | 1.8                   |
| 82952 | KW-2211S  | Biopsy forceps                 | 1100                | 2.2                   |
| 82954 | KW-2215S  | Biopsy forceps                 | 1500                | 2.2                   |
| 82956 | KW-2218CS | Biopsy forceps for ERCP scopes | 1800                | 2.2                   |
| 82958 | KW-2411S  | Biopsy forceps                 | 1100                | 2.4                   |
| 82960 | KW-2415S  | Biopsy forceps                 | 1500                | 2.4                   |
| 82962 | KW-2418S  | Biopsy forceps                 | 1800                | 2.4                   |
| 82964 | KW-2422S  | Biopsy forceps                 | 2200                | 2.4                   |
| 82966 | KW-2430S  | Biopsy forceps                 | 3000                | 2.4                   |



## Biopsy forceps with window and extra large cups



Autoclavable



One piece  
with grip



For particularly large biopsies.

| Code  | Article  | Description    | Working length (mm) | Max. outer diam. (mm) |
|-------|----------|----------------|---------------------|-----------------------|
| 82968 | KW-3111S | Biopsy forceps | 1100                | 3.1                   |
| 82970 | KW-3115S | Biopsy forceps | 1500                | 3.1                   |
| 82972 | KW-3122S | Biopsy forceps | 2200                | 3.1                   |

## Biopsy forceps with window and spike



Autoclavable

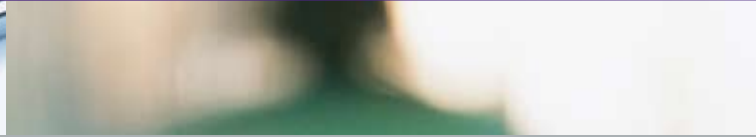


One piece  
with grip



With spike for improved tissue retention during biopsies.

| Code  | Article   | Description                    | Working length (mm) | Max. outer diam. (mm) |
|-------|-----------|--------------------------------|---------------------|-----------------------|
| 82974 | KH-2211S  | Biopsy forceps                 | 1100                | 2.2                   |
| 82976 | KH-2215S  | Biopsy forceps                 | 1500                | 2.2                   |
| 82978 | KH-2218CS | Biopsy forceps for ERCP scopes | 1800                | 2.2                   |
| 82980 | KH-2222S  | Biopsy forceps                 | 2200                | 2.2                   |
| 82982 | KH-2411S  | Biopsy forceps                 | 1100                | 2.4                   |
| 82984 | KH-2415S  | Biopsy forceps                 | 1500                | 2.4                   |
| 82986 | KH-2418CS | Biopsy forceps for ERCP scopes | 1800                | 2.4                   |
| 82989 | KH-2422S  | Biopsy forceps                 | 2200                | 2.4                   |
| 82991 | KH-2430S  | Biopsy forceps                 | 3000                | 2.4                   |



Please note that the maximum diameter of the accessory should be at least 0.2 mm smaller than the diameter of the instrument channel.

### Biopsy forceps with window, spike and extra large cups



Autoclavable



One piece with grip



For particularly large biopsies, incorporating spike for improved tissue retention during biopsies.

| Code  | Article  | Description    | Working length (mm) | Max. outer diam. (mm) |
|-------|----------|----------------|---------------------|-----------------------|
| 82995 | KH-3115S | Biopsy forceps | 1500                | 3.1                   |
| 82997 | KH-3122S | Biopsy forceps | 2200                | 3.1                   |

### Biopsy forceps with mini cups



Autoclavable



One piece with grip



For small-calibre endoscopes, e.g. bronchoscopes or cholangioscopes.

| Code  | Article   | Description    | Working length (mm) | Max. outer diam. (mm) |
|-------|-----------|----------------|---------------------|-----------------------|
| 82934 | KS-1011CS | Biopsy forceps | 1100                | 1.0                   |
| 82936 | KS-1022CS | Biopsy forceps | 2200                | 1.0                   |

## Biopsy forceps with round cups



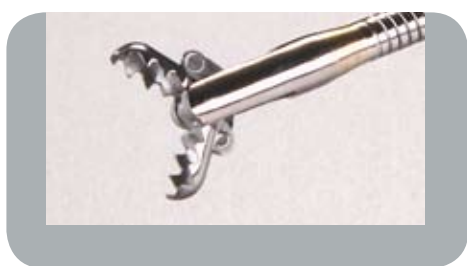
**Autoclavable**



**One piece  
with grip**

| Code  | Article  | Description    | Working length (mm) | Max. outer diam. (mm) |
|-------|----------|----------------|---------------------|-----------------------|
| 86125 | KW-2411R | Biopsy forceps | 1100                | 2.4                   |
| 86087 | KW-2415R | Biopsy forceps | 1500                | 2.4                   |
| 86131 | KW-2418R | Biopsy forceps | 1800                | 2.4                   |
| 86084 | KW-2422R | Biopsy forceps | 2200                | 2.4                   |
| 86128 | KW-2430R | Biopsy forceps | 3000                | 2.4                   |

## Crocodile biopsy forceps



**Autoclavable**



**One piece  
with grip**

| Code  | Article   | Description                    | Working length (mm) | Max. outer diam. (mm) |
|-------|-----------|--------------------------------|---------------------|-----------------------|
| 82999 | KA-1811S  | Biopsy forceps                 | 1100                | 1.8                   |
| 85254 | KA-1815S  | Biopsy forceps                 | 1500                | 1.8                   |
| 85256 | KA-2215S  | Biopsy forceps                 | 1500                | 2.2                   |
| 85258 | KA-2218CS | Biopsy forceps for ERCP scopes | 1800                | 2.2                   |
| 85260 | KA-2411S  | Biopsy forceps                 | 1100                | 2.4                   |
| 85262 | KA-2415S  | Biopsy forceps                 | 1500                | 2.4                   |
| 85264 | KA-2422S  | Biopsy forceps                 | 2200                | 2.4                   |



Please note that the maximum diameter of the accessory should be at least 0.2 mm smaller than the diameter of the instrument channel.

## Hot Biopsy forceps



Autoclavable



Can be dismantled for cleaning



Can be used with HF-equipment

| Code  | Article  | Description                   | Working length (mm) | Max. outer diam. (mm) |
|-------|----------|-------------------------------|---------------------|-----------------------|
| 85280 | DK-2518  | Biopsy forceps with handle    | 1800                | 2.5                   |
| 85284 | DK-2518W | Biopsy forceps without handle | 1800                | 2.5                   |
| 85282 | DK-2522  | Biopsy forceps with handle    | 2200                | 2.5                   |
| 85286 | DK-2522W | Biopsy forceps without handle | 2200                | 2.5                   |

## Hot Biopsy forceps for haemostasis



Autoclavable



Can be dismantled for cleaning



Can be used with HF-equipment



Especially fine gauge for precise primary haemostasis.

| Code  | Article    | Description                   | Working length (mm) | Max. outer diam. (mm) |
|-------|------------|-------------------------------|---------------------|-----------------------|
| 86224 | HDB-2418   | Biopsy forceps with handle    | 1800                | 2.4                   |
| 86384 | HDB-2418-W | Biopsy forceps without handle | 1800                | 2.4                   |
| 86227 | HDB-2422   | Biopsy forceps with handle    | 2200                | 2.4                   |
| 86382 | HDB-2422-W | Biopsy forceps without handle | 2200                | 2.4                   |





## Grasping forceps

### V-shaped grasping forceps



Autoclavable



One piece  
with grip

| Code  | Article  | Description      | Working length (mm) | Max. outer diam. (mm) |
|-------|----------|------------------|---------------------|-----------------------|
| 85266 | GV-1811S | Grasping forceps | 1100                | 1.8                   |
| 85268 | GV-1815S | Grasping forceps | 1500                | 1.8                   |
| 85270 | GV-2211S | Grasping forceps | 1100                | 2.2                   |
| 85272 | GV-2215S | Grasping forceps | 1500                | 2.2                   |
| 85274 | GV-2222S | Grasping forceps | 2200                | 2.2                   |

### V-shaped isolated grasping forceps



Autoclavable



One piece  
with grip

| Code  | Article  | Description      | Working length (mm) | Max. outer diam. (mm) |
|-------|----------|------------------|---------------------|-----------------------|
| 85276 | GV-2415I | Grasping forceps | 1500                | 2.4                   |
| 85278 | GV-2422I | Grasping forceps | 2200                | 2.4                   |





## Basket grasping forceps

**i** Please note that the maximum diameter of the accessory should be at least 0.2 mm smaller than the diameter of the instrument channel.

### Basket grasping forceps with handle



**Autoclavable**



**Can be dismantled for cleaning**

**i** Max. dimensions of the basket  
 L1 = 25 mm  
 M1 = 15 mm  
 S1 = 11 mm  
 S2 = 6 mm  
 S3 = 5.6 mm

| Code  | Article   | Description                                    | Working length (mm) | Max. outer diam. (mm) |
|-------|-----------|------------------------------------------------|---------------------|-----------------------|
| 85288 | GB-1122L1 | Basket grasping forceps with handle for FCP-9P | 2200                | 1.1                   |
| 85290 | GB-1807M1 | Basket grasping forceps with handle            | 700                 | 1.8                   |
| 85292 | GB-1807S1 | Basket grasping forceps with handle            | 700                 | 1.8                   |
| 85294 | GB-1807S2 | Basket grasping forceps with handle            | 700                 | 1.8                   |
| 85296 | GB-1807S3 | Basket grasping forceps with handle            | 700                 | 1.8                   |
| 85300 | GB-1907M1 | Basket grasping forceps with handle            | 700                 | 1.9                   |
| 85298 | GB-1907L1 | Basket grasping forceps with handle            | 700                 | 1.9                   |
| 85302 | GB-1911L1 | Basket grasping forceps with handle            | 1100                | 1.9                   |
| 85304 | GB-1911M1 | Basket grasping forceps with handle            | 1100                | 1.9                   |
| 85306 | GB-2211L1 | Basket grasping forceps with handle            | 1100                | 2.2                   |
| 85308 | GB-2218L1 | Basket grasping forceps with handle            | 1800                | 2.2                   |
| 85310 | GB-2222L1 | Basket grasping forceps with handle            | 2200                | 2.2                   |

## Basket grasping forceps without handle



Max. dimensions of the basket

L1 = 25 mm

M1 = 15 mm

S1 = 11 mm

S2 = 6 mm

S3 = 5.6 mm

| Code  | Article     | Description                            | Working length (mm) | Max. outer diam. (mm) |
|-------|-------------|----------------------------------------|---------------------|-----------------------|
| 85312 | GB-1807M1-W | Basket grasping forceps without handle | 700                 | 1.8                   |
| 85314 | GB-1807S1-W | Basket grasping forceps without handle | 700                 | 1.8                   |
| 85316 | GB-1807S2-W | Basket grasping forceps without handle | 700                 | 1.8                   |
| 85318 | GB-1807S3-W | Basket grasping forceps without handle | 700                 | 1.8                   |
| 85320 | GB-1907L1-W | Basket grasping forceps without handle | 700                 | 1.9                   |
| 85322 | GB-1907M1-W | Basket grasping forceps without handle | 700                 | 1.9                   |
| 85324 | GB-1911L1-W | Basket grasping forceps without handle | 1100                | 1.9                   |
| 85326 | GB-1911M1-W | Basket grasping forceps without handle | 1100                | 1.9                   |
| 85328 | GB-2211L1-W | Basket grasping forceps without handle | 1100                | 2.2                   |
| 85330 | GB-2218L1-W | Basket grasping forceps without handle | 1800                | 2.2                   |
| 85332 | GB-2222L1-W | Basket grasping forceps without handle | 2200                | 2.2                   |

## Injection needles

### Injection needles



Sterile packed



One piece with grip



Single use only

| Code   | Description                                      | Working length (mm) | Max. outer diam. (mm) |
|--------|--------------------------------------------------|---------------------|-----------------------|
| 300834 | Disposable sclerosis treatment needle, Mediglobe | 2300                | 1.9                   |

## Snares oval

**i** Please note that the maximum diameter of the accessory should be at least 0.2 mm smaller than the diameter of the instrument channel.

### Snares oval with handle



**Autoclavable**



**Can be used with HF-equipment**



**Can be dismantled for cleaning**

**i** Unless otherwise stated, the loop opening is 30 mm.

| Code  | Article      | Description                                                            | Working length (mm) | Max. outer diam. (mm) |
|-------|--------------|------------------------------------------------------------------------|---------------------|-----------------------|
| 86452 | DD-2321S-25S | Snare set, soft, 2 pieces with handle<br>Attention: wide opening 25 mm | 2100                | 2.3                   |
| 85336 | DT-2116H     | Snare set, hard, 2 pieces with handle                                  | 1600                | 2.1                   |
| 85344 | DT-2116S     | Snare set, soft, 2 pieces with handle                                  | 1600                | 2.1                   |
| 85338 | DT-2711H     | Snare set, hard, 2 pieces with handle                                  | 1100                | 2.7                   |
| 85346 | DT-2711S     | Snare set, soft, 2 pieces with handle                                  | 1100                | 2.7                   |
| 85340 | DT-2718H     | Snare set, hard, 2 pieces with handle                                  | 1800                | 2.7                   |
| 85348 | DT-2718S     | Snare set, soft, 2 pieces with handle                                  | 1800                | 2.7                   |
| 85342 | DT-2721H     | Snare set, hard, 2 pieces with handle                                  | 2100                | 2.7                   |
| 85350 | DT-2721S     | Snare set, soft, 2 pieces with handle                                  | 2100                | 2.7                   |
| 86446 | DD-2321S-15S | Snare set, soft, 2 pieces with handle<br>Attention: wide opening 15 mm | 2100                | 2.3                   |



## Snare oval without handle



**Autoclavable**



**Can be used with HF-equipment**



**Can be dismantled for cleaning**



Unless otherwise stated, the loop opening is 30 mm.

| Code  | Article    | Description | Working length (mm) | Max. outer diam. (mm) |
|-------|------------|-------------|---------------------|-----------------------|
| 85352 | DT-2116H-W | Snare, hard | 1600                | 2.1                   |
| 85360 | DT-2116S-W | Snare, soft | 1600                | 2.1                   |
| 85354 | DT-2711H-W | Snare, hard | 1100                | 2.7                   |
| 85356 | DT-2718H-W | Snare, hard | 1800                | 2.7                   |
| 85364 | DT-2718S-W | Snare, soft | 1800                | 2.7                   |
| 85358 | DT-2721H-W | Snare, hard | 2100                | 2.7                   |
| 85366 | DT-2721S-W | Snare, soft | 2100                | 2.7                   |





## Snares hexagonal

### Snares hexagonal with handle



Auto-clavable



Can be used with HF-equipment



Can be dismantled for cleaning



Unless otherwise stated, the loop opening is 30 mm.

| Code  | Article     | Description                                                            | Working length (mm) | Max. outer diam. (mm) |
|-------|-------------|------------------------------------------------------------------------|---------------------|-----------------------|
| 85368 | DH-2116H    | Snare set, hard, 2 pieces with handle                                  | 1600                | 2.1                   |
| 85376 | DH-2116S    | Snare set, soft, 2 pieces with handle                                  | 1600                | 2.1                   |
| 85518 | DH-2121S-12 | Snare set, soft, 2 pieces with handle<br>Attention: wide opening 12 mm | 2100                | 2.1                   |
| 85370 | DH-2711H    | Snare set, hard, 2 pieces with handle                                  | 1100                | 2.7                   |
| 85378 | DH-2711S    | Snare set, soft, 2 pieces with handle                                  | 1100                | 2.7                   |
| 85372 | DH-2718H    | Snare set, hard, 2 pieces with handle                                  | 1800                | 2.7                   |
| 85380 | DH-2718S    | Snare set, soft, 2 pieces with handle                                  | 1800                | 2.7                   |
| 85374 | DH-2721H    | Snare set, hard, 2 pieces with handle                                  | 2100                | 2.7                   |
| 85382 | DH-2721S    | Snare set, soft, 2 pieces with handle                                  | 2100                | 2.7                   |
| 86391 | DH-2730H    | Snare set, hard, 2 pieces with handle                                  | 3000                | 2.7                   |

### Snares hexagonal without handle



Auto-clavable



Can be used with HF-equipment



Can be dismantled for cleaning



Unless otherwise stated, the loop opening is 30 mm.

| Code  | Article       | Description                                  | Working length (mm) | Max. outer diam. (mm) |
|-------|---------------|----------------------------------------------|---------------------|-----------------------|
| 85386 | DH-2116H-W    | Snare, hard                                  | 1600                | 2.1                   |
| 85394 | DH-2116S-W    | Snare, soft                                  | 1600                | 2.1                   |
| 85520 | DH-2121S-12-W | Snare, soft<br>Attention: wide opening 12 mm | 2100                | 2.1                   |
| 85388 | DH-2711H-W    | Snare, hard                                  | 1100                | 2.7                   |
| 85396 | DH-2711S-W    | Snare, soft                                  | 1100                | 2.7                   |
| 85390 | DH-2718H-W    | Snare, hard                                  | 1800                | 2.7                   |
| 85398 | DH-2718S-W    | Snare, soft                                  | 1800                | 2.7                   |
| 85392 | DH-2721H-W    | Snare, hard                                  | 2100                | 2.7                   |
| 85400 | DH-2721S-W    | Snare, soft                                  | 2100                | 2.7                   |
| 86417 | DH-2730H-W    | Snare, hard                                  | 3000                | 2.7                   |

## Handles

### Handles



**Autoclavable**



**Can be used with HF-equipment**

| Code  | Article | Description                                                                        |
|-------|---------|------------------------------------------------------------------------------------|
| 83391 | OD-D1   | Handle for all snares                                                              |
| 83469 | OD-B1   | Handle for basket grasping forceps GB-1807S1; S2; S3; M1                           |
| 83419 | OD-B2   | Handle for basket grasping forceps GB-1907M1; L1/GB-1911M1; L1/GB-2211L1/GB-2222L1 |
| 83396 | OD-D3   | Handle hot biopsy forceps                                                          |

## Catheter/Spraying Catheter

### Catheter



**Autoclavable**

| Code   | Article                                                         | Description    | Working length (mm) | Max. outer diam. (mm) |
|--------|-----------------------------------------------------------------|----------------|---------------------|-----------------------|
| 85434  | TS-1611S                                                        | Catheter       | 1100                | 1.6                   |
| 85436  | TS-1616S                                                        | Catheter       | 1600                | 1.6                   |
| 85438  | TS-2011S                                                        | Catheter       | 1100                | 2.0                   |
| 85440  | TS-2016S                                                        | Catheter       | 1600                | 2.0                   |
| 85442  | TS-2021S                                                        | Catheter       | 2100                | 2.0                   |
| 86074  | TJ-1817WS                                                       | Catheter spray | 1700                | 1.8                   |
| 86073  | TJ-2417WS                                                       | Catheter spray | 1700                | 2.4                   |
| 86070  | TJ-2423WS                                                       | Catheter spray | 2300                | 2.4                   |
| 300055 | Reduction catheter for duodenoscopes for 4.2 mm working channel |                | 1400                | -                     |

**PENTAX Europe GmbH**  
LIFE CARE  
Julius-Vosseler-Straße 104  
22527 Hamburg  
Germany  
Tel.: +49 40 / 5 61 92 - 0  
Fax: +49 40 / 5 60 42 13  
E-mail: medical@pentax.de

**PENTAX U.K. Limited**  
LIFE CARE  
Pentax House  
Heron Drive, Langley  
Slough SL3 8PN  
United Kingdom  
Tel.: +44 17 53 / 79 27 23  
Fax: +44 17 53 / 79 27 94  
E-mail: lifecare.info@pentax.co.uk

**PENTAX Italia S.r.l.**  
LIFE CARE  
Via Dione Cassio, 15  
20138 Milano  
Italy  
Tel.: +39 / 02 50 99 58 1  
Fax: +39 / 02 50 99 58 60  
E-mail: marketing.lifecare@pentaxitalia.it

**PENTAX Nederland B.V.**  
LIFE CARE  
Lage Mosten 35  
4822 NK Breda  
Netherlands  
Tel.: +31 76 / 5 31 30 31  
Fax: +31 76 / 5 31 30 00  
E-mail: medical@pentax.nl

**PENTAX France S.A.S.**  
LIFE CARE  
112 quai de Bezons  
P. B. 204  
95106 Argenteuil  
France  
Tel.: +33 1 / 30 25 75 75  
Fax: +33 1 / 30 25 75 76  
E-mail: medical@pentax.fr

**HOYA Corporation**  
**PENTAX Tokyo Office**  
2-36-9, Maeno-cho  
Itabashi-Ku  
174-8639 Tokyo  
Japan  
Tel.: +81 33 / 9 60 51 55  
Fax: +81 35 / 3 92 67 24

Your PENTAX sales representative:

Product availability cannot be guaranteed in all countries. For further information please contact your local sales representative.  
Specifications are subject to change without prior notice and without any obligation on the part of the manufacturer.

www.pentaxeurope.com  HOYA Corporation · ISO 9001/EN ISO 13485 certified